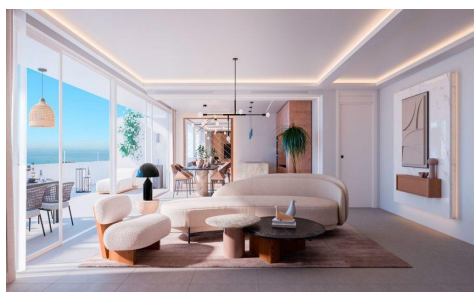


MLS46310E



EXCLUSIVE DESIGN AND UNBEATABLE VIEWS €9,311,000



3



2



159m²



N/A



*** MAGNIFICENT SPACIOUS APARTMENT WITH 3 BEDROOMS AND 2 BATHROOMS WITH 83SQM TERRACE SOUTHWEST FACING WITH VIEWS TO THE MEDITERRANEAN SEA. OUTDOOR KITCHEN INSTALLED AND INCLUDED IN THE PRICE. (*** SEE FLOORPLAN BETWEEN THE PHOTOS ***). *** EXCLUSIVE DESIGN AND UNMATCHED VIEWS, IN AN ENVIRONMENT WITH ALL THE COMFORTS, EQUIPMENT, LEISURE, FUN AND GASTRONOMY ALTERNATIVES !!!!! Exclusive low-density tourist development in Benalmádena, as it will only have 33 apartments and penthouses with 2-3 bedrooms with large terraces and impressive panoramic views. The homes are built to the highest quality specifications and have an open plan