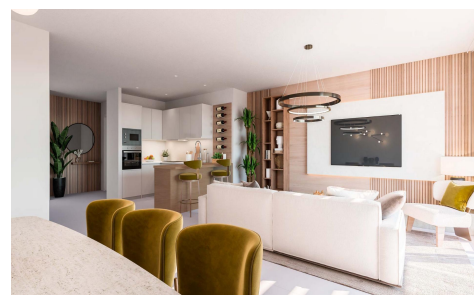
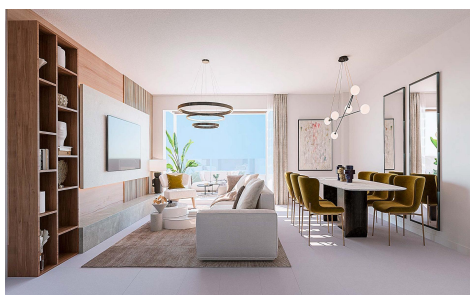
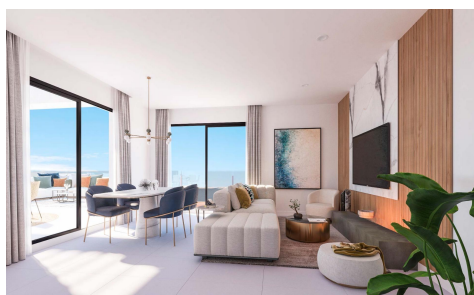




**** APARTMENTS, PENTHOUSES AND SEMI-DETACHED HOUSES WITH SEA VIEWS



3



2



122m²



N/A



*** DUPLEX PENTHOUSE WITH 75SQM OF OUTDOOR SPACES BETWEEN COVERED AND UNCOVERED TERRACE AND SOLARIUM !!! . **** APARTMENTS, PENTHOUSES AND SEMI-DETACHED HOUSES WITH SEA VIEWS FOR SALE IN BENALMÁJENA READY TO DELIVER AT THE END OF THIS YEAR !!! . An exclusive, private development situated in a privileged location in Benalmájená. Thanks to its elevated position, all homes boast breathtaking panoramic views of the sea and the coast. The sloping terrain allows for staggered housing, with large terraces that are further enhanced by glass railings that appear to blend seamlessly with the sea in front, allowing for maximum appreciation of the views and...(Ask for More